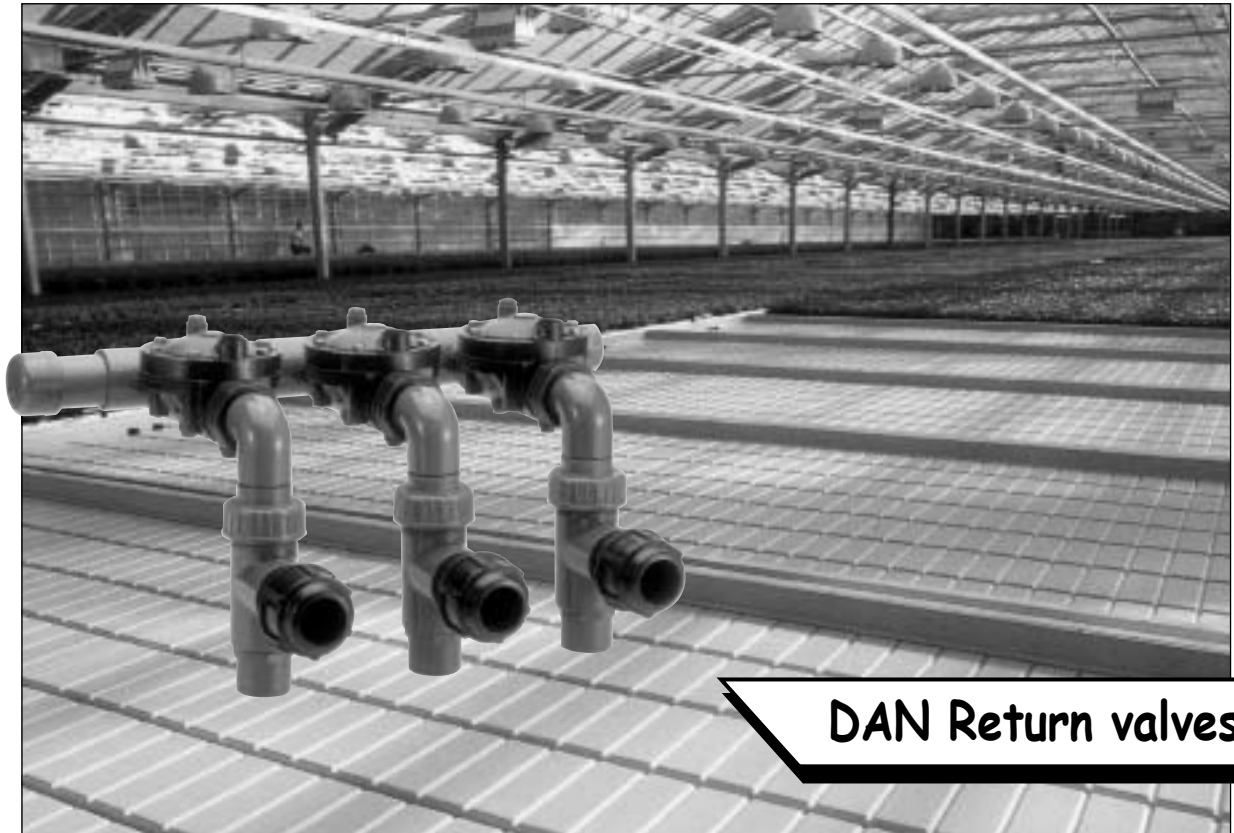


DAN Return valves



DAN Return valves for ebb/flow systems

DAN Return valves is developed to relieve quick drainage on ebb/flow tables.

The DAN Return valves are mounted after the solenoid valves, which are placed on a manifold. When the solenoid valve opens, the water will push the return valve piston down and close the outlet on the return valve. The water will now run to the tables until the solenoid valve is closed, after which a spring will press the piston back and the water can now run back, e.g. to a reservoir.

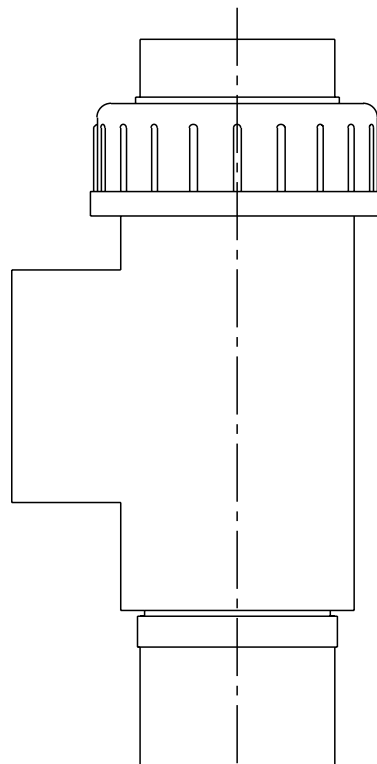
DAN Return valves

Item no.: 0800080

DAN 50 Return valve 1.1/2"

Draining capacity:

Outlet capacity: 60 litres/min
Min. working pressure: 1 bar
Pressure loss: 0,2 bar

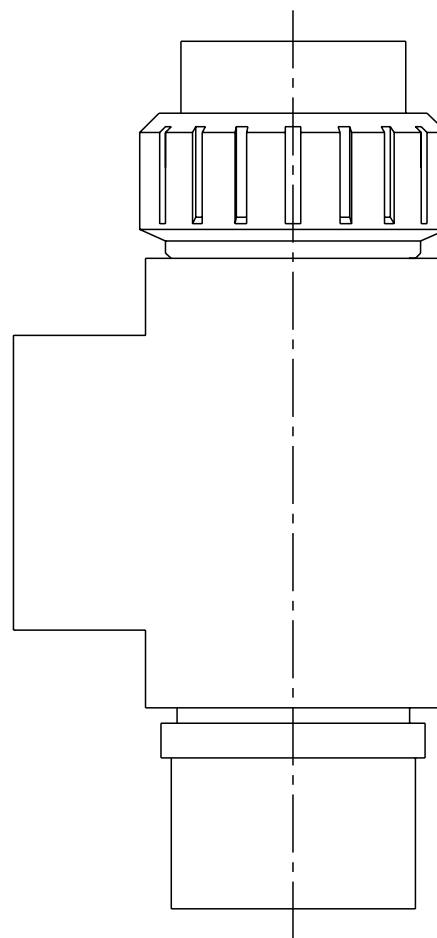


Item no.: 0800090

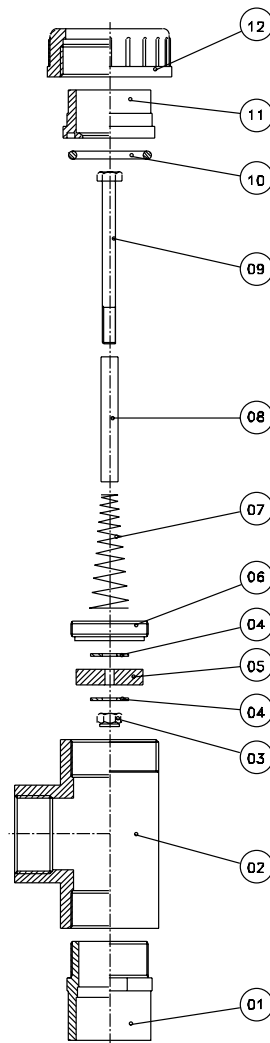
DAN 100 Return valve 2"

Draining capacity:

Outlet capacity: 120 litres/min
Min. working pressure: 1 bar
Pressure loss: 0,2 bar

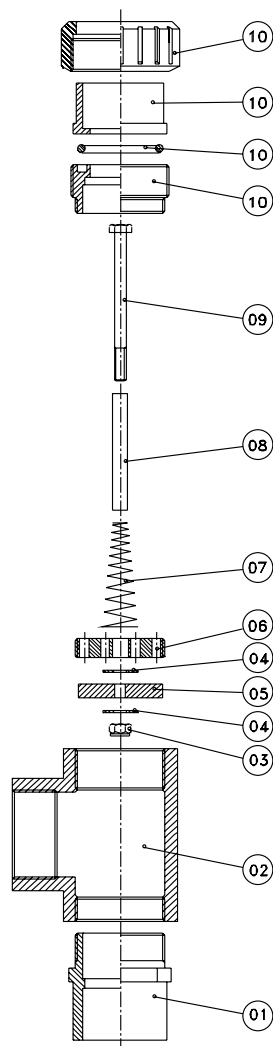


Spareparts DAN 50



| Description | | Dimension | Item no. |
|-------------|----------------------|---------------------|----------|
| 12 | Union nut PVC | 2" | 1210700 |
| 11 | Collar | 40 mm | 1210705 |
| 10 | O-ring for union | 40 mm | 1210710 |
| 09 | Set screw | 8 x 100 mm A4 | 1210720 |
| 08 | Sliding pipe | 10 x 1 mm A4 | 1210723 |
| 07 | Spring - 12 windings | 12 x 70 mm | 1210726 |
| 06 | Perforation plate | 1 1/2" | 1210715 |
| 05 | Gasket | 42 x 20 mm | 1210724 |
| 04 | Washer plate | 8 mm A4 | 1210722 |
| 03 | Lock nut | 8 mm A4 | 1210721 |
| 02 | Tee | 1 1/2" | 1202214 |
| 01 | Reducing nipple | 50 x 40 mm x 1 1/2" | 1201232 |

Spareparts DAN 100



| Description | | Dimension | Item no. |
|-------------|------------------------|---------------|----------|
| 10 | Union with male thread | 63 mm x 2" | 1210230 |
| 09 | Set screw | 8 x 100 mm A4 | 1210720 |
| 08 | Sliding pipe | 10 x 1 mm A4 | 1210723 |
| 07 | Spring - 12 windings | 12 x 70 mm | 1210726 |
| 06 | Perforation plate | 2" | 1210716 |
| 05 | Gasket | 56 x 20 mm | 1210725 |
| 04 | Washer plate | 8 mm A4 | 1210722 |
| 03 | Lock nut | 8 mm A4 | 1210721 |
| 02 | Tee | 2" | 1202216 |
| 01 | Reducing nipple | 50 mm x 2" | 1201238 |