



CREATING  
A CLIMATE  
FOR GROWTH

**PRIVA**

## > PRIVA COMPASS

Point your crops in the right direction

The Priva Compass process computer is a user-friendly starter computer that can control irrigation, climate, photosynthesis, water and energy for four compartments.



Priva Compass consists of small, flexible hardware and software modules and has a very user-friendly interface. This allows you to monitor your process at any time of the day. Priva Compass, with its state-of-the-art technology and affordable price, is unique in the market. With its built-in Wi-Fi network, you can operate the computer from any device, whenever you like. The software is available separately; for each crop zone and theme you can opt for base modules or advanced modules. In this way, it can be tailored to everyone's own requirements.

### Advantages of Priva Compass

- > Starter computer for small and medium sized growing companies
- > Flexible: You can select the modules and the level you need
- > Clear controls with dashboards and graphs
- > Local operation possible via the cloud or via Wi-Fi (remote)
- > Suitable for smartphones, tablets and PCs
- > Hightech at an affordable price
- > Priva quality and reliability
- > Online and offline help function

## Easy operation with dashboards

Whatever device you're using, with the Priva Compass Operator you will always have a clear dashboard at your disposal. The dashboards show you the most important information in a direct and straightforward manner. Thanks to the well-designed interface with intuitive dashboards and graphs, you can see at a glance what the status is of various components and which ones may require action. This will ensure you are informed about your process at all times.

The Priva Compass Operator has a Wi-Fi hotspot functionality. What if you don't have access to a wired or Wi-Fi network? In that case, you can operate your Priva Compass system wirelessly within a radius of approximately 10 meters.

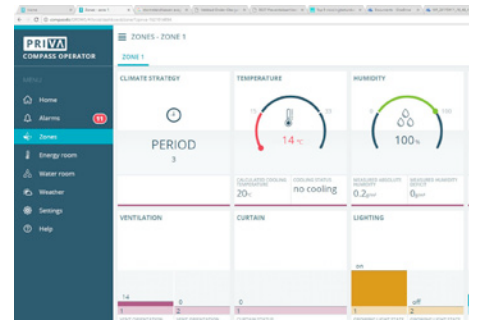
## Priva Compass 2S and 4S

Priva Compass is available in two basic versions: Priva Compass 2S and Priva Compass 4S. You can choose the version that is best suited for your needs, based on the required number of measurements and controls.

- > 2S: up to three free places for I/O modules
- > 4S: up to six free places for I/O modules and one for a mixed I/O module

### Like to know more?

For more information, please contact your Priva partner or Jaco de Vries from the Sales Horticulture department by phone at phone number 0174-522 620 or [jaco.de.vries@priva.nl](mailto:jaco.de.vries@priva.nl). We will be pleased to assist you.



## Find the right Priva Compass for you in three steps

Finding the right Priva Compass for your crop and your ambitions is very easy.

1. Determine your themes: irrigation, climate, photosynthesis, water and/or energy.
2. Determine the level you need: base or advanced.
3. Determine which I/O modules are required for your system.

For each of the themes, both a base and an advanced software module is available. The table overview shows you which systems you can control.

	IRRIGATION EC/PH	CLIMATE	PHOTOSYNTHESIS CO <sub>2</sub>	ENERGY ROOM	WATER ROOM
<b>Basic</b>	Irrigation valves <b>10</b> Irrigation strategy <b>1</b>	C /RH measurement <b>1</b> Strategy Periods <b>2</b> Heating on/off <b>2</b> Vents <b>2</b> Cooling stages <b>2</b> Curtains <b>1</b>	Lights <b>1</b>	Boiler pump <b>2</b>	Water supply pump <b>1</b> Flow sensor <b>1</b>
<b>Advanced</b>	Irrigation valves <b>40</b> Irrigation strategy <b>10</b> Irrigation sensors <b>10</b> Drain valves <b>40</b> Drain measurement <b>1</b>	C /RH measurement <b>4</b> Strategy Periods <b>4</b> Heating on/off <b>4</b> Vents <b>4</b> Cooling stages <b>6</b> Curtains <b>4</b> Local temp. sensors <b>8</b> Localized heating <b>4</b> Soil temp. sensors <b>4</b> Soil heating <b>4</b> Mixing valves <b>4</b> Recirculation fans <b>1</b> Misting strategy <b>1</b> Humidity strategy <b>1</b> Temp. influences <b>12</b> External overrides <b>2</b> Custom control progr. <b>6</b>	Lights <b>4</b> CO <sub>2</sub> dosing <b>1</b>	Boiler pump <b>4</b> Boiler control <b>4</b> Ring line valve <b>1</b> Custom control progr. <b>6</b>	Water supply pump <b>1</b> Flow sensor <b>1</b> Dosing channels <b>5</b> Custom control progr. <b>6</b>
					<b>Enterprise</b>
					Water supply pump <b>1</b> Flow sensor <b>1</b> Dosing channels <b>8</b> Custom control progr. <b>6</b> EC pre control <b>1</b> Irrigation tanks <b>8</b> Backwash control <b>1</b>